



TOOWOOMBA

Endocrine & Diabetes

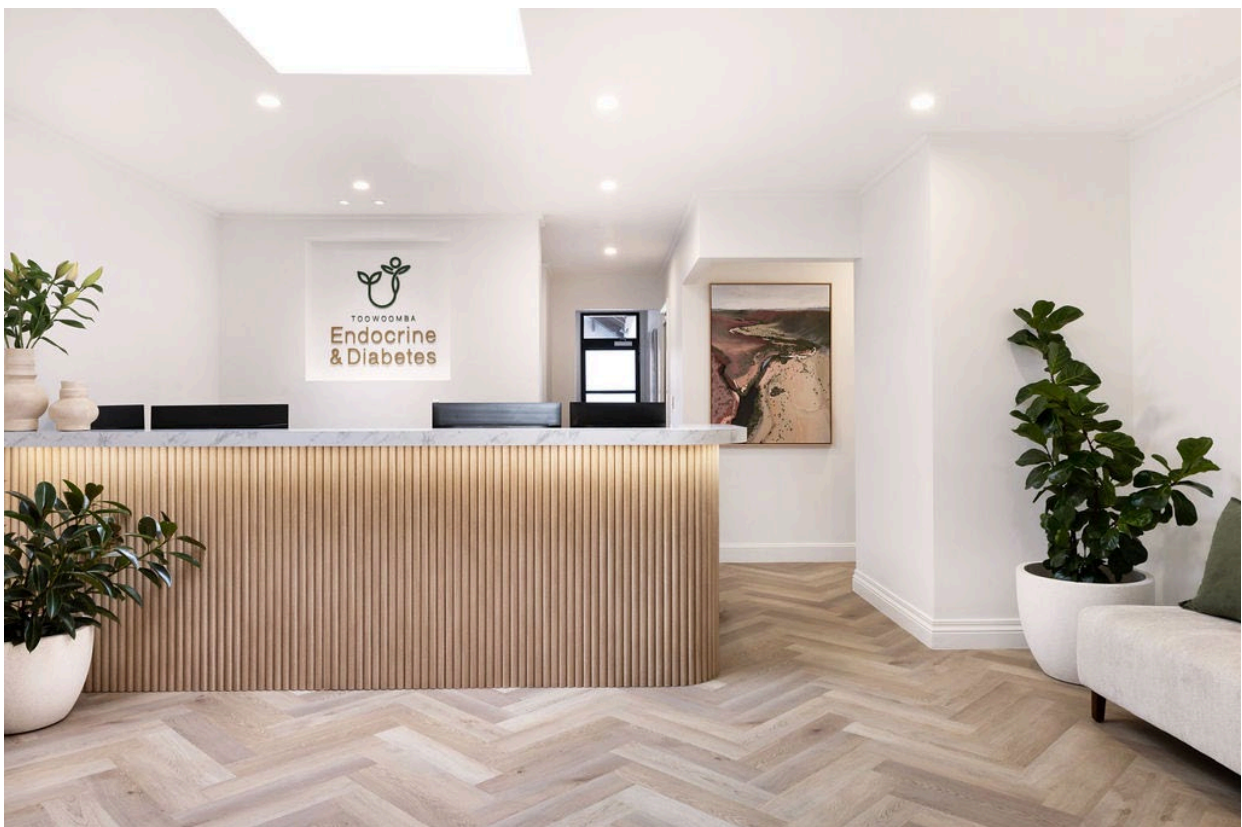
JOIN OUR TEAM

Toowoomba Endocrine and Diabetes is the premier Endocrinology and Diabetes Medical Service on the Darling Downs, and we are looking to increase the scope and range of services that we can offer.

We are seeking experienced and keen Medical and Allied Health (Dietician/Podiatry) staff with a specific interest in Endocrinology, Diabetes Management and Care, Obstetric Medicine, Weight Loss, Gender Affirming Care and other related services.

This document aims to give general information on the options available when considering whether to join our team. The rates provided are a guide only and exact rates are by negotiation and agreement on a case-by-case basis. There are multiple options when considering joining our team.

- Be an employee.
- Join as a Contractor.
- Lease/Rent a room only (Furnished).



Join as an Employee

The safe option, with no risks of business ownership or contractor management issues. Taxation and Superannuation is looked after as part of the normal employment contract.

Most often used by Administration, Allied Health and Nursing professionals, this option is available to medical staff and has benefits that may be suitable for some medical professionals.

Join a professional team dedicated to improving the lives of our patients through excellent care.

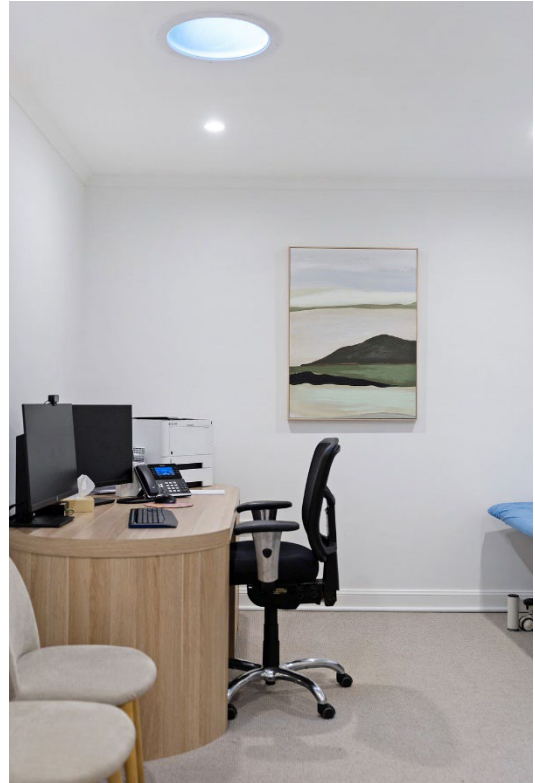
This is a Monday to Friday option and is highly flexible to suit employees with families.

Example Rates

- Medical Rate.
 - \$232/hour (approx 70% of expected Billings)
- Allied Health Rate.
 - \$62/Hour (Equivalent to HP4)
- Registered Nurse Rate.
 - \$51/hour (Equivalent to RN Level 5-7)
- Diabetes Educator Rate.
 - \$60/hour (Equivalent to CN Level 6-2)

Benefits

- Flexible work arrangements – Part Time and Family Friendly hours available.
- Well above award rate of pay, known in advance.
- Annual Pay increases.
- Paid Leave as per the relevant award.
- Options for variable rates and bonuses based on activity.
- No outlay for room set up or business set up.
- No need for an ABN, Sole trader arrangements, BAS or Accountants.
- Fortnightly Pay with all Taxation managed on a fortnightly basis as part of the deal.
- Generous Superannuation.
- Inclusion on our website and any advertising.
- Access to trained Admin staff and excellent practice software.
- Access to brand new modern facilities with free use of education space.
- Modern, stylish and brand-new air-conditioned consulting rooms.
- Each consult room has a modern business PC, new business grade office chair, Laser Printer, Large consulting room desk, Wash Sink with appropriate clean up space, Sharps disposal kit, electric Examination Couch and Sphygmomanometer.
- Each room has new carpet and paint and has original or high-quality print artwork already installed.
- The practice has 300kg Bariatric Scales, Automatic Juro X8 Coffee machine, Staff only toilet facilities, Full kitchen with fridge and Microwave.
- The offices are professionally cleaned weekly and vacuumed daily.



Join as a Contractor

The most common option for medical professionals, with flexibility as a contractor to own your own business and be in control of your work life. The best of both worlds.

This option requires you to have a recognised business entity and to enter into a contractor agreement with us. You should seek legal and accounting advice prior to entering into this agreement, however this is a popular option for medical staff.

This option is potentially available 7 Days per Week and may suit staff who work in other places such as the Public Hospital or within other practices as contractors.

Rates (per week)

- Single Day – 30% of Billings
- 2 - 4 Days – 25% of Billings
- Full Time – 20% of Billings

Benefits

- Activity based remuneration.
- Full control of working hours.
- No Payroll Taxation.
- Patient payments paid directly to you.
- Competitive practice fees, known in advance.
- Accounts managed by the practice meaning no chasing of health funds, Medicare, DVA or WorkCover for payment.
- Access to trained Admin staff (M-F) and excellent practice software, including all licenses and training.
- Access to all facilities with free use of education space.
- Profiling on our website and advertising.
- Complaints and Compliments are managed in house by the General Manager.
- Modern, stylish and brand-new air-conditioned consulting rooms.
- Each consult room has a modern business PC, new business grade office chair, Laser Printer, Large consulting room desk, Wash Sink with appropriate clean up space, Sharps disposal kit, electric Examination Couch and Sphygmomanometer.
- Each room has new carpet and paint and has original or high-quality print artwork already installed.
- We have a lovely, warm reception and waiting area that comprises spacious, comfortable furniture and wonderful artworks for your patients to enjoy whilst they wait.
- The practice has 300kg Bariatric Scales, Automatic Juro X8 Coffee machine, Staff only toilet facilities, Full kitchen with fridge and Microwave.
- The offices are professionally cleaned weekly and vacuumed daily.



Join by Renting or Leasing a Room Only

The other option, with complete autonomy to run your own business as you want it to be run while having access to the highest quality of medical rooms available.

This option is popular with visiting Medical staff who have a home base elsewhere and are in Toowoomba for the day only. This provides flexibility and known costs to plan financially for your scheduling and finances.

This option is available 7 Days per Week. Some exclusions apply and are listed below.

Rates (per Day)

- Full Day - \$275 (\$250 + GST)
- Half Day - \$176 (\$160 + GST)
- Two Rooms - \$352 (\$320 + GST)
- Alternative - 20% of Billings

Benefits

- Short or long term, full day or part day options are available.
- Modern, clean, stylish and brand-new air-conditioned consulting rooms.
- Each consult room has a modern business PC with camera for Telehealth, new business grade office chair, Laser Printer, Large consulting room desk, Wash Sink with appropriate clean up space, Sharps disposal kit, electric Examination Couch and sphygmomanometer.
- Each room has new carpet and paint and has original or high-quality print artwork already installed.
- The practice has 300kg Bariatric Scales, High Speed Internet, Air Conditioning, Automatic Juro X8 Coffee machine, Staff only toilet facilities, Full kitchen with fridge and Microwave,
- The offices are professionally cleaned weekly and vacuumed daily.
- We have a lovely, warm reception and waiting area that comprises spacious, comfortable furniture and wonderful artworks for your patients to enjoy whilst they wait.
- We can supply basic reception services including a meet and greet, handling enquiries, and ad-hoc duties as required on a fee-for-service basis, or we can create space for you to manage this by yourself.

Exclusions

- Access to Practice Software or records/letters management.
- Billing or cash handling.
- Health Fund, Medicare, DVA or WorkCover management.
- Administrative Staff outside of items listed above.
- Scheduling of patients, including management of cancellations and rebooking.
- Profiling on the TED Website or advertising is by arrangement and fees apply (Cost recovery only).



Further information on joining our team can be found by contacting the General Manager on 0438277739 or by e-mail at accounts@twba-ed.com.au